



MINI & SLIM

# Cal. VX01B

Movement Size

4 3/4'''

Casing Diameter

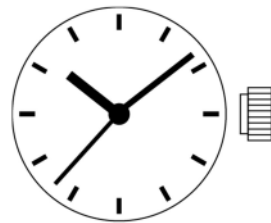
10.8 × 13.75 mm

Height

2.39mm

Battery Life

2 years



**S.EPSON PRODUCTS**  
JAPAN TECHNOLOGY & QUALITY

Date: 27/Feb./'15

# Cal. VX01B

Items	Rev.	Page
Specifications	06	1
Appearance	02	2
Casing	04	3
Hand fitting	02	4
Hand setting stem	03	5
Dial	02	6
Casing ring	01	7

**Analog Quartz 4 3/4" Slim Movement / Three Hands(H/M/S)**

**1. MOVEMENT DIMENSIONS**

Outside diameter	10.80mm(3-9H) × 14.50mm(12-6H)
Casing diameter	10.80mm(3-9H) × 13.75mm(12-6H)
Total height	2.39mm(2.48mm including battery)

**2. TIME STANDARD**

Type of quartz oscillator	Tuning fork
Frequency of quartz oscillator	32,768 Hz
Accuracy	±20 seconds per month (on wrist)
Operating temperature range	-5°C to +50°C
Regulation device	Nil (Pre-adjusted)

**3. INDICATOR / FUNCTIONS**

3 Hands	Hour / Minute / Second
Power depletion warning function(BLD) (Second hand moves at 2-second intervals)	
Reset switch	
Setting mechanism	Crown at normal position : Free Crown pulled out 1st click : Time setting / Reset

**4. FEATURES**

Jewels	0 Jewels
Anti-magnetism	Over 1600A/m (Direct current magnetic field)
Maximum unbalance of hands	Hour hand : 0.13 μ N·m Minute hand : 0.15 μ N·m Second hand : 0.05 μ N·m

**5. BATTERY**

Type / Size	Silver oxide battery / φ 5.8mm × t 2.15mm
Recommended battery	SR521SW (Maxell, Sony, Seizaiken)
Nominal voltage	1.55 V
Battery life	Approx. 2 years
Driving current consumption	Approx. 0.8 μ A
Operation stopping voltage	1.0 V

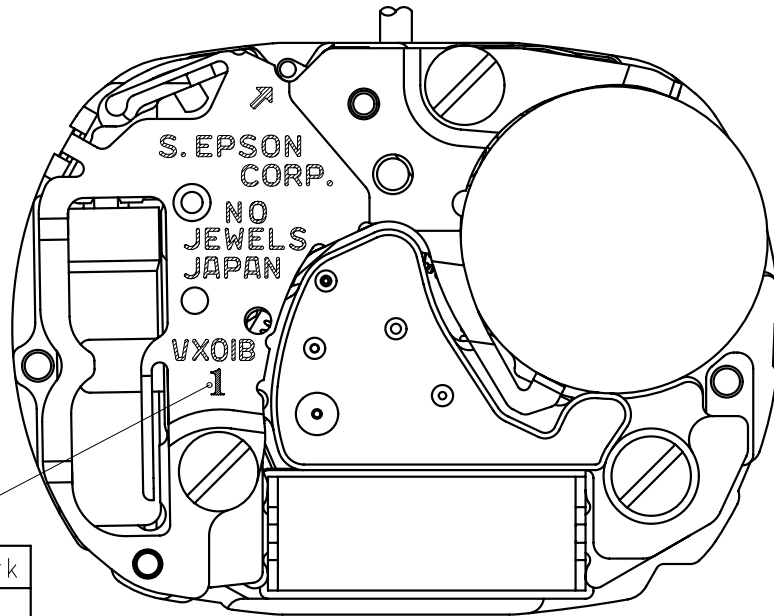
**6. SEPARATED PARTS (Parts code)**

Hour wheel	0271803(Type S) or 0271808(Type L)
Dial washer	0491735
Hand setting stem	0351807 or 0351808 or 0351819 or 0351818
Battery	SR521SW

**7. TEST OF ACCURACY**

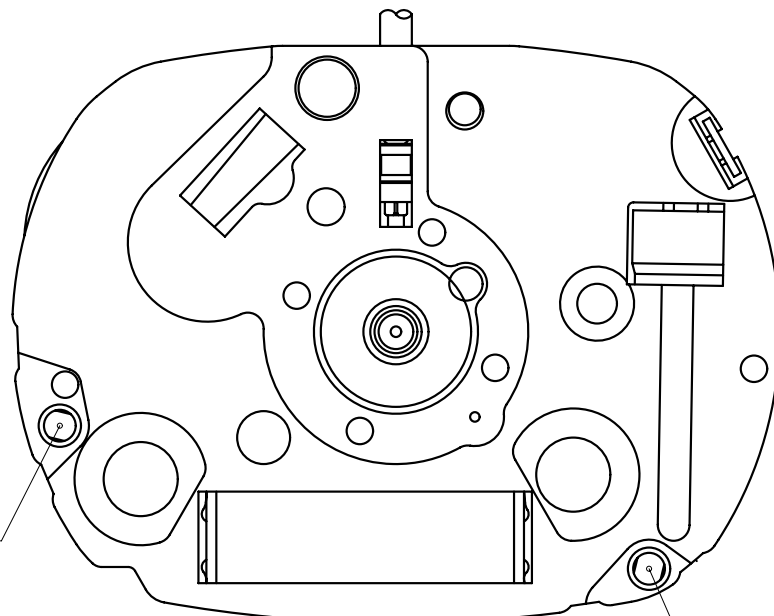
Equipment to be used	SEIKO quartz tester QT-99, Greiner quartz timer-C , Witschi Q-tester 4000
Duration of measurement	10 seconds
Microphone to be used	Electromagnetic detection type

All specifications are subject to change without notice.



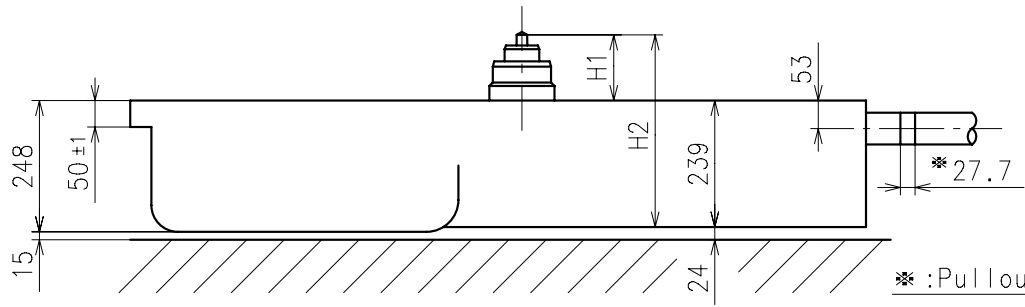
Hands type

	Mark
Type S (1)	1
Type L (3)	3



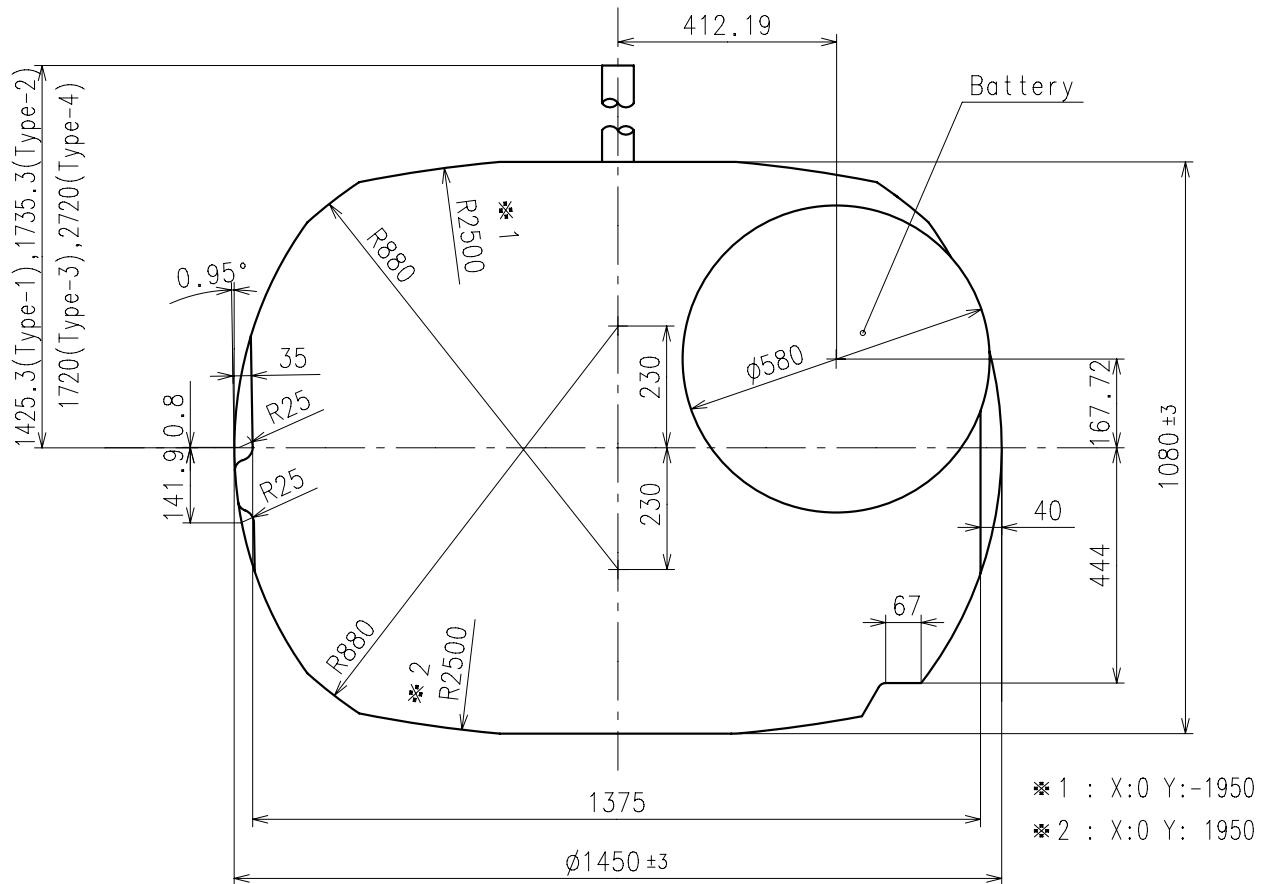
Dial leg hole B

Dial leg hole A



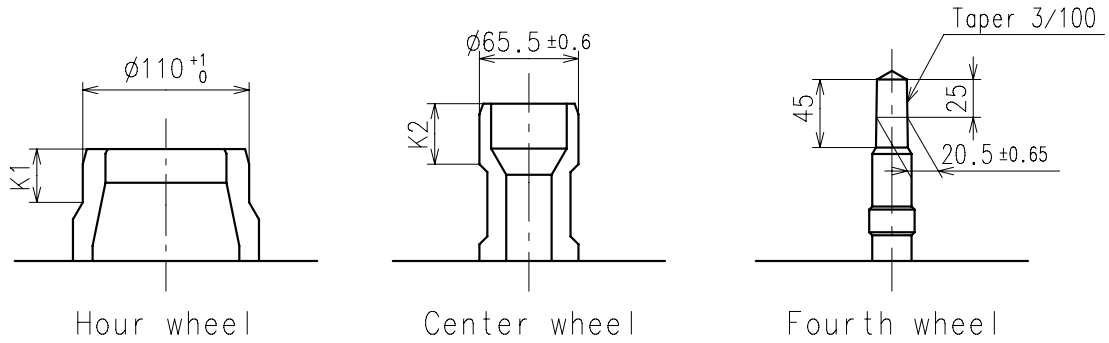
\*: Pullout stroke

Center post		Type S (1) VX01B1	Type L (3) VX01B2
Maximum height from dial support	H1	124	170
Total height including movement	H2	363	409

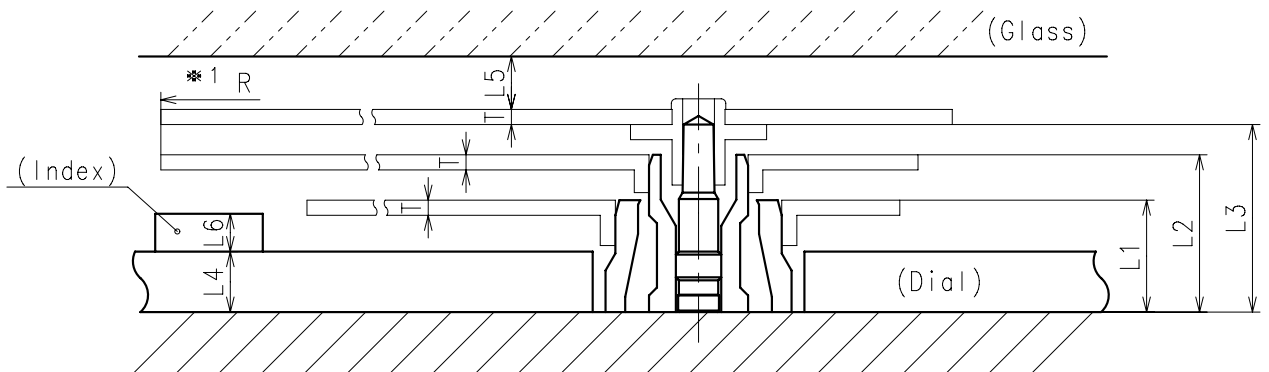


\* 1 : X:0 Y:-1950  
\* 2 : X:0 Y: 1950

- ※ Hour hand unbalance  $\leq 0.13\mu \text{ N} \cdot \text{m}$  ( $13\mu \text{ g} \cdot \text{m}$ )
- ※ Minute hand unbalance  $\leq 0.15\mu \text{ N} \cdot \text{m}$  ( $15\mu \text{ g} \cdot \text{m}$ )
- ※ Second hand unbalance  $\leq 0.05\mu \text{ N} \cdot \text{m}$  ( $5\mu \text{ g} \cdot \text{m}$ )

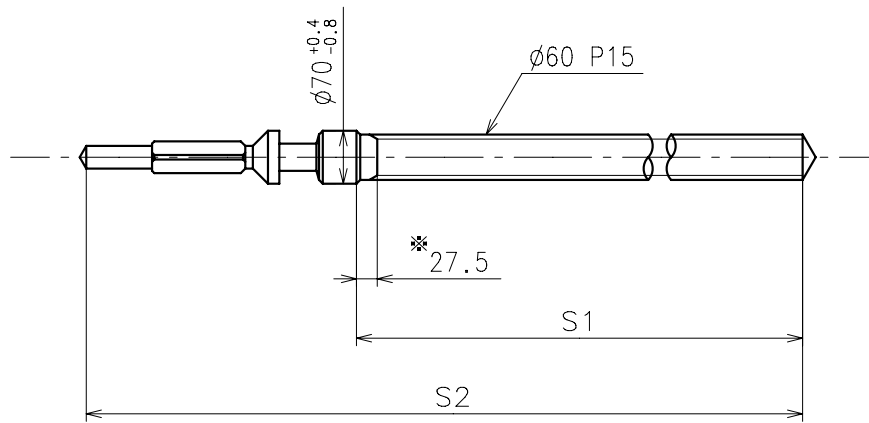


	Parts No.			Dimension	
	Hour wheel	Center wheel	Fourth wheel	K1	K2
Type S (1) VX01B1	0271803	0221809	0241509	40	40
Type L (3) VX01B2	0271808	0221808	0241515	104	40



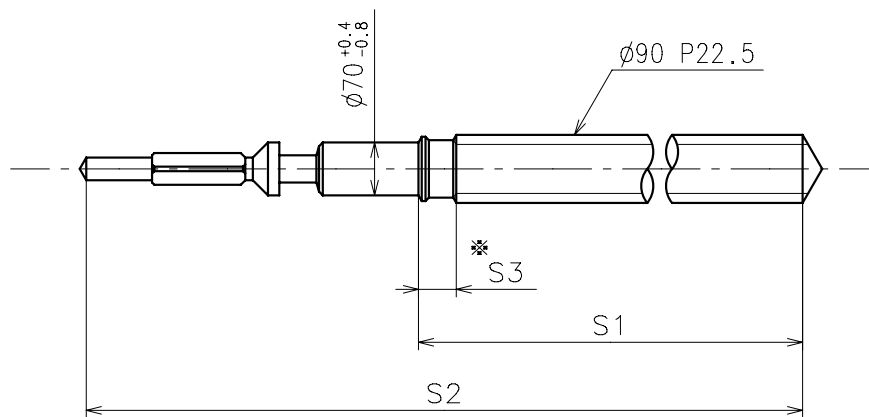
	L1	L2	L3	L4	L5	L6	T	*1 R
Type S (1) VX01B1	74	104	124	40	MIN: 40	MAX: 22	10	MAX: 750
Type L (3) VX01B2	120	150	170	90	MIN: 40	MAX: 22	10	MAX: 750

※1:It is the size taken into consideration for hands attachment.  
Please observe some standard value specified in unbalance when using long hands.



※ Not threaded

	Part No.	S1	S2
Type-1 (Standard)	0351807	935	1292.3
Type-2	0351808	1245	1602.3



※ Not threaded

	Part No.	S1	S2	S3
Type-3	0351819	1148	1577	50
Type-4	0351818	2148	2577	1050

Material : Steel

Hardness : Vickers 600±50

